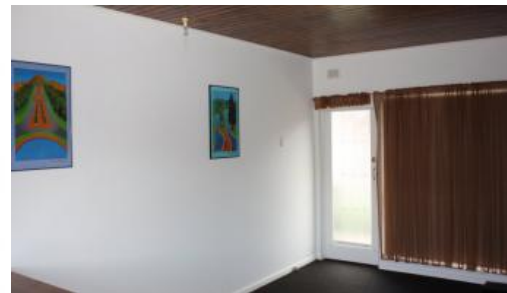


8, 11 Helenslea Avenue, Brooklyn Park



## EASY LIVING UNIT IN CENTRAL LOCATION!

Close to Airport, Ikea, Aldi, Harbour Town & easy commute to CBD

- Kitchen with Open Plan Living Dining
- 1 Bedroom with Built-In Robe
- 1 Bathroom
- Walk out Balcony
- 1 Carpark (allocated)

Well positioned to shopping, city & transport

 1  1

Price \$220 per Week

Property Type Rental

Property ID 76

Agent Details

Rob Mackenzie - 0412 112 312

Office Details

ROB MACKENZIE REAL ESTATE

0412112312



Please apply for this property online

See the "Apply Online" button below the Agent details.

If you have any questions or would like to organise an inspection, contact Rob Mackenzie on 0412 112 312

The above information provided has been furnished to us by the vendor/s. We have not verified whether or not that information is accurate and do not have any belief in one way or the other in its accuracy. We do not accept any responsibility to any person for its accuracy and do no more than pass it on. All interested parties should make and rely upon their own inquiries in order to determine whether or not this information is in fact accurate.